

LUTRONIC

## HEALITE II™

830, 633, 415 nm LED  
Phototherapy System

DISCOVER THE TRUE  
SCIENCE OF LED  
PHOTOTHERAPY



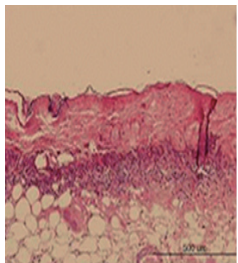
## Indications / Treatments – without other adjunctive applications

			
Wavelength*	830 nm with 590 nm photosequencing	633nm	415nm
Indications	<ul style="list-style-type: none"> <li>Wound Healing</li> <li>Pain Relief</li> </ul>	<ul style="list-style-type: none"> <li>Wound Healing</li> </ul>	<ul style="list-style-type: none"> <li>Active Acne (Endogenous PDT)</li> </ul>
<b>*Indications depend on the selectable wavelength of each head.</b>			

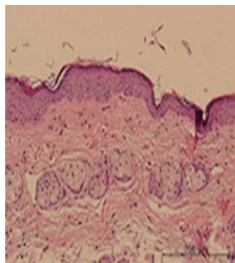
## Indication / Treatments – with other adjunctive applications

- Accelerates wound healing post laser or post surgery
- Reduces pain, bruising, edema and erythema
- Improves the clinical results

Before



After



This slides show the changes in dermatitis associated inflammatory cells following 830 nm LED irradiation in a rat model: A marked reduction in inflammatory infiltration can be seen.<sup>1</sup>

<sup>1</sup> Is light-emitting diode phototherapy (LED-LLLT) really effective?

WS Kim, RG Calderhead, Laser Therapy 2011; 20.3:205-215

Post Excoriation Wound Treatment



Courtesy of P. K. Min, MD, South Korea

Infection after Filler Injection



Courtesy of W. S. Kim, MD, South Korea

Androgenic Alopecia



Courtesy of B. Rümmelein, MD, Switzerland

Swelling and Redness



Courtesy of B. Rümmelein, MD, Switzerland

Rosacea



Courtesy of B. Rümmelein, MD, Switzerland

Actinic Keratosis



Courtesy of B. Rümmelein, MD, Switzerland

### Healing Time Comparison

Tx / Indication	Without HEALITE II	With HEALITE II
After Facelift	Up to 13 weeks	Up to 6 weeks (53% reduction)
Bruising	1 week	1 – 2 days (78% reduction)
Erythema	15 - 16 weeks	2 weeks (87% reduction)
Edema	5 days to 1 week	2 – 3 days (58% reduction)

# Discover the True Science of LED Phototherapy

Low-Level Light Therapy (LLLT) with HEALITE II is the therapeutic use of incident light to photomodulate cellular function, improving healing times, relieving pain, subsiding active acne, and others. HEALITE II harnesses the properties of 830/590, 633 and 415 nm light via Light Emitting Diode (LED) technology, properly delivered and concentrated, treating effectively without possibility of physical trauma or thermal damage. LLLT with HEALITE II can be used as a standalone therapy or as an adjunctive therapy with many other treatments.

## Why LLLT using LEDs?

- Ideal wavelength
- Powerful enough to penetrate deep where it is needed
- Works at subcellular, cellular and tissue level
- Works alone or as an adjunctive therapy
- Treats multiple indications
- Pain-free, non-invasive, treatment of patients

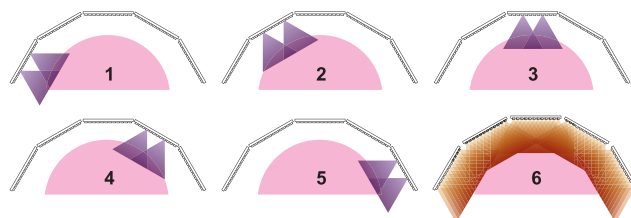
## Why HEALITE II?

- Photo-Sequencing Technology (PST)
- A total of 1800 durable, hi-quality LED's
- Fully adjustable head, panels and arm
- Ergonomic design
- User-friendly touch-screen
- Stable and easy to maneuver

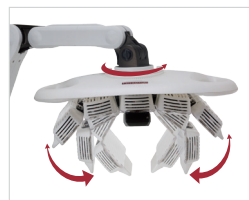
## PROVIDE THE RESULTS YOUR PATIENTS WANT

### Photo-Sequencing Technology (PST)

Pre-emptive micro-low level light therapy ( $\mu$ -LLLT) with 590 nm is preceded for 60 seconds ahead of continuous delivery of 830 nm in order to pre-condition epidermis and enhance dermal tissue interaction by 830 nm.



Adjustable head for large coverage or focused intensity;  
Flexible arm can fit any parts of treatment area.



"HEALITE II is a useful adjunct to almost any aesthetic treatment. It is so important now that I couldn't imagine practicing aesthetic medicine without it."

Won-Serk Kim, M.D., Ph.D.,  
Dermatologist, Seoul, Korea



## WORLD WIDE CLINICAL STUDIES

“Is light-emitting diode phototherapy (LED-LLLT) really effective?”<sup>1</sup>

“The systemic effect of 830 nm LED phototherapy on the wound healing of burn injuries: A controlled study in mouse and rat models.”<sup>2</sup>

“HEALITE II with photosequencing technology.”<sup>3</sup>

More studies are in process to explore various applications in the aesthetic, medical and surgical fields.

<sup>1</sup> WS Kim, RG Calderhead. *Laser Therapy*, 2011;20.3:205-215.

<sup>2</sup> GY Lee, WS Kim. *Journal of Cosmetic and Laser Therapy*. 2012;Feb: [Epub ahead of print]

<sup>3</sup> RG Calderhead. Lutronic. 2011.



## HEALITE II

Head Type (Wavelengths (nm))	830 (w/ 590)	830 (w/590) + 633	415 + 830 (w/590)
Intensity (mW/cm <sup>2</sup> ) - Planar	40 - 100	830 (w/590): 35 - 80 633: 20 - 50	415: 10 - 30 830 (w/590): 35 - 80

## SYSTEM SPECIFICATIONS\*

Light Source	LEDs (Light Emitting Diodes)
Type and degree of protection against electrical shock	CLASS I / No applied part
Electrical Rating	AC 100-230V, 50/60Hz, FUSE 250 V/6.3 A
Power Consumption	600 VA
User Interface	3.2" Touch LCD Module
Cooling System	Cold Air
Dimensions	Body (mm): 556 (W) x 671 (L) x 1562 (H) Head (mm): 510 (W) x 300 (L) x 110 (H)
	Body (in): 21.9 (W) x 26.4 (L) x 61.5 (H) Head (in): 20.1 (W) x 11.8 (L) x 4.3 (H)
Weight	27 kg, 59.5 lbs

### Lutronic Corporation

Lutronic Center, 219 Sowon-ro, Deogyang-gu, Goyang-si, Gyeonggi-do, KOREA  
TEL. +82 31 908 3440 / FAX. +82 1600 3660 / e-mail. office@lutronic.com  
[www.lutronic.com](http://www.lutronic.com)

### Lutronic Inc.

1 North Avenue, Unit C, Burlington, MA 01803, USA  
TEL. +1 888 588 7644

### Lutronic Japan Co., Ltd.

9F Hakataekimae Center Bldg., 1-14-16 Hakataekimae, Hakata-ku, Fukuoka city, Fukuoka-pref., 812-0011, JAPAN  
TEL. +81 92 477 2755 / FAX. +81 92 477 2756

### Lutronic China

A-28F, Posco Center, Hongtai Dong jie, Dawangjing Science Business Park, Chaoyang District, Beijing, 100102, CHINA  
TEL. +86 10 8453 8551