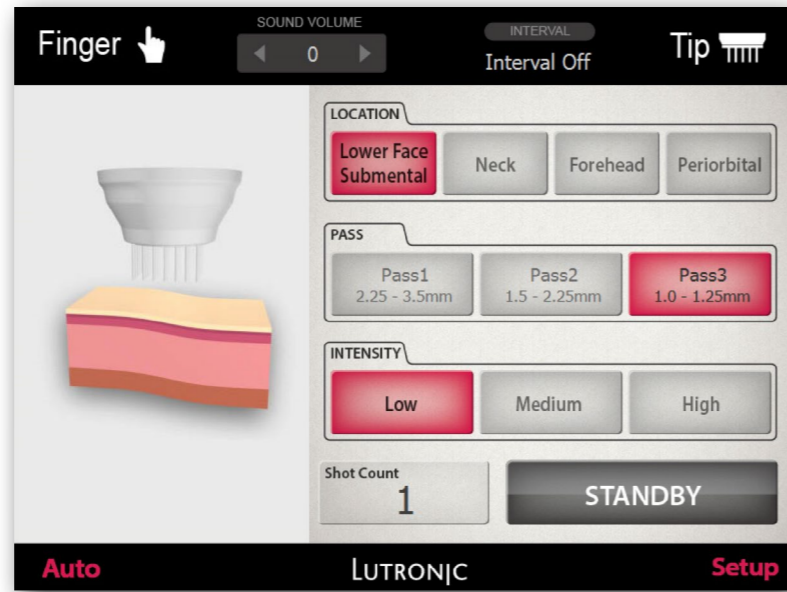


DELIVERING OPTIMIZED OUTCOMES IS AS EASY AS 1, 2, 3¹

- 1** SELECT TREATMENT ZONE
- 2** SELECT PASS DEPTH
- 3** SELECT INTENSITY

¹Manual Mode still available



Proprietary optimized pin to pin RF transmission across 7X7 array of 49 insulated microneedles



WHAT PHYSICIANS ARE SAYING



"I've been involved in the laser device business for many years. When it really came down to the science, I believe INFINI provides the most tightening for the effort and least amount of downtime."

Jason Pozner, MD



"I've been using INFINI for about a year, we have been really excited about the results we have seen for acne scars and neck rejuvenation. I think one of the things that stands out with INFINI as opposed to other devices is minimal downtime. You can finish a treatment and just be a little pink the next day."

Joel Cohen, MD

SYSTEM SPECIFICATIONS*

| | |
|-------------|---------------------------------------|
| System Type | Bipolar RF (Radiofrequency) |
| Weight | 28 kg |
| Dimension | 362 mm (W) x 409 mm (L) x 1713 mm (H) |

Lutronic Global Center

19 Fortune Drive, Billerica, MA 01821 USA
TEL : +1-888-588-7644 / E-MAIL : officeusa@lutronic.com

Lutronic Asia Pacific Center

Lutronic Center, 219 Sowon-ro, Deogyang-gu, Goyang-si, Gyeonggi-do, KOREA
TEL : +82 31 908 3440 / FAX : +82 1600 3660 / E-MAIL : office@lutronic.com

Lutronic Germany

Paul-Ehrlich-Strasse 38, 63322 Roedermark, Germany
TEL : +49 6074 2153180 / FAX : +49 6074 2153190 / E-MAIL : germany@lutronic.com

lutronic.com

©2018, LUTRONIC Group of Companies. All rights reserved. LUTRONIC, its logo, and INFINI are trademarks or registered trademarks of the LUTRONIC Group of Companies. *Specifications are subject to change without notice. This product or the use of this product is covered by one or more US and foreign patents or patent application pending. INFINI_BR_20180122
For International Use Only

Lutronic Japan

12F, Tokyo Front Terrace, 2-3-14, Higashi-Shinagawa, Shinagawa-ku, Tokyo, JAPAN
TEL : +81-3-6433-3041 / FAX : +81-3-6433-3042
E-MAIL : japan-office@lutronic.com

Lutronic China

Yuzhou plaza 2001 room, Jingang road 299 no, Pudong district, Shanghai 200120, China
TEL: +86-21-5019-3891,3893 / FAX: +86-21-5019-3865

LUTRONIC

INFINI HIGH INTENSITY FOCUSED RF The Next Generation of 3D Fractional Volumization

Precisely Delivered Radiofrequency Through Insulated Microneedles for Consistent Outcomes You and Your Patients Will Love



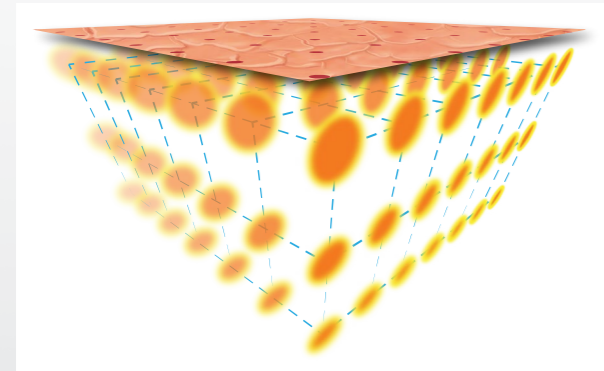
LUTRONIC

INFINI RADIOFREQUENCY MICRONEEDLING

TECHNOLOGY BREAKTHROUGH OF THE DECADE

INFINI is unique technology that puts you in control of your procedure. You control the treatment depth and energy levels to enable a multi-layered approach for customized treatments, regardless of skin type or tan. Now you can provide the best solution that will keep your patients returning and referring you to new patients.

EACH TREATMENT SESSION PLACES 50,000+ MICRO-COAGULATION ZONES.

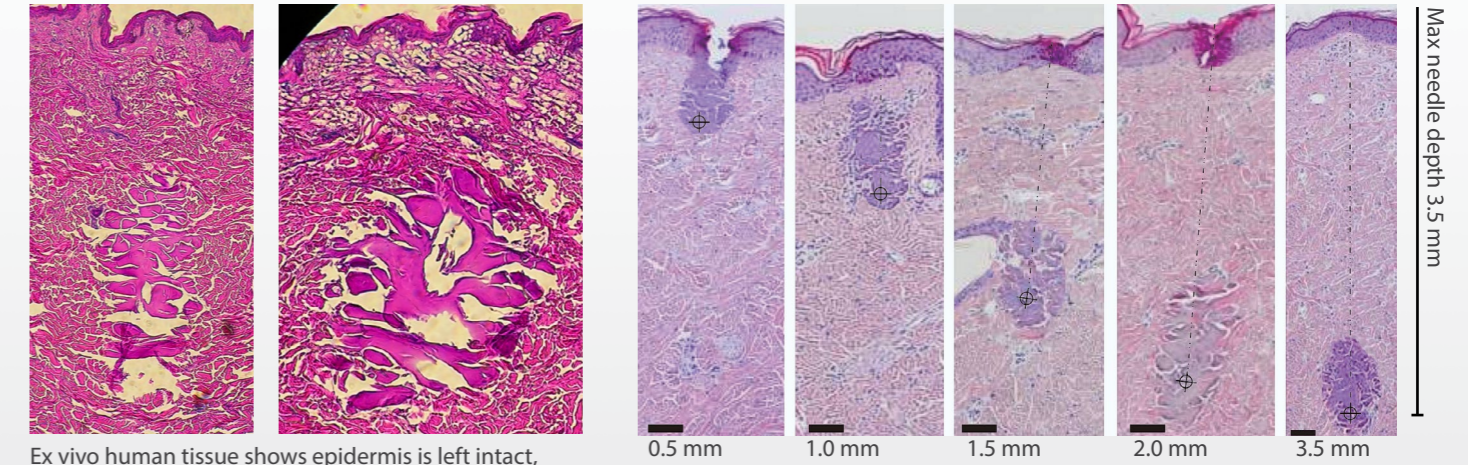


WHY INFINI WITH RF ENERGY?

- Creates thousands of coagulation zones
- Insulated microneedles ensure precise energy delivery
- Automatic settings
- Safe on all skin types
- Minimal downtime (makeup after 24 hours)
- Easy to delegate

MICRONEEDLE RF TREATMENT DELIVERS ENERGY A PRECISE DEPTHS

Infini is clinically proven, with studies to back the technology. The histology images below show the discrete coagulative injury zones in the dermis while sparing the epidermis. The natural healing process replaces the damaged zones with new collagen and elastin.



Ex vivo human tissue shows epidermis is left intact, while variable depth coagulation zones are present.

0.5 mm 1.0 mm 1.5 mm 2.0 mm 3.5 mm
All depths treated at Level 4 for 100 ms
Courtesy of SB Cho, MD, Dermatologist, Yonsei University, S. Korea

PROVEN RESULTS



Wrinkles and Skin Laxity - Courtesy of Steve Weiner, MD

Wrinkles - Courtesy of Edmond Griffin, MD



Texture and Laxity - Courtesy of Oscar Hevia, MD

Wrinkles - Courtesy of Steve Weiner, MD



Acne Scars - Courtesy of Omar Ibrahim, MD, PhD

Acne Scars - Courtesy of Swapnil Shah, MD



Laxity - Courtesy of Sarah Mess, MD

Laxity - Courtesy of Matteo T. Clementoni MD